

## 1 BEFORE YOU START

What you need to start:

1. PC\*.
2. The software folder.
3. ENY-PV unit.
4. Ethernet cable
5. Router or access point (optional)

\*Regarding point 1, minimum requirements for the PC are not available yet. Currently, the provisional minimum requirements are:

1. Windows 7 os or higher
2. resolution of 1280x720 or better.
3. AccessDatabaseEngine - 2007 ODBC. You will find it in the software folder. Generally, it is already installed on the PC.

### 1.1 AccessDatabaseEngine - 2007 ODBC

You will find it in the software folder.

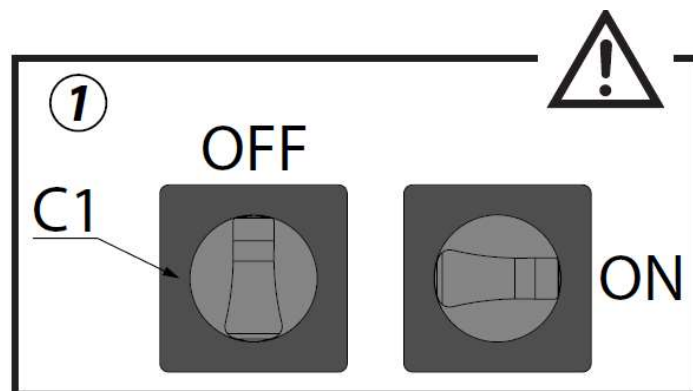
...\210217 - ENY-PV Manager 0.992\Release\AccessDatabaseEngine - 2007 ODBC.exe

Launch the executable and follow the instructions.

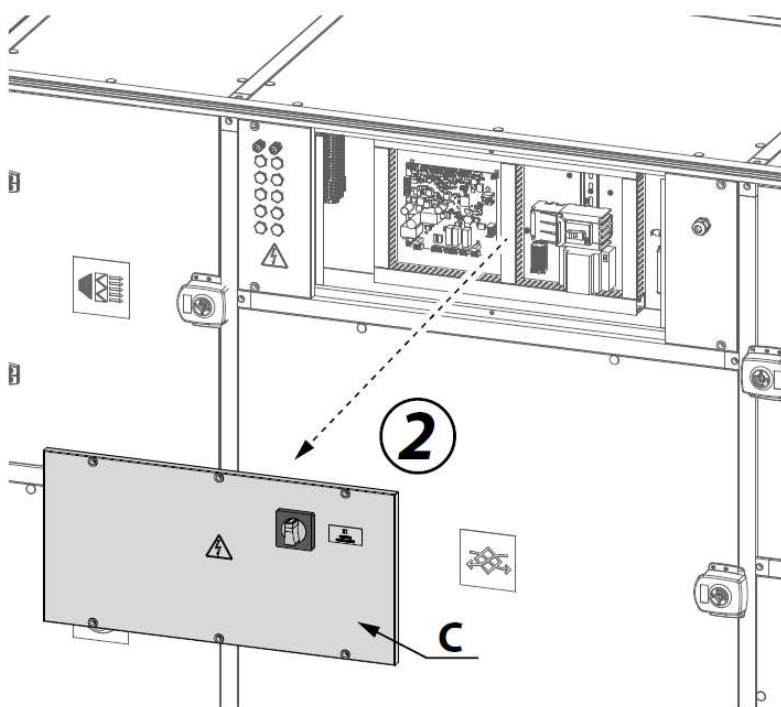
## 2 ACCESS TO THE BOARD

To access the electrical panel, it is necessary to:

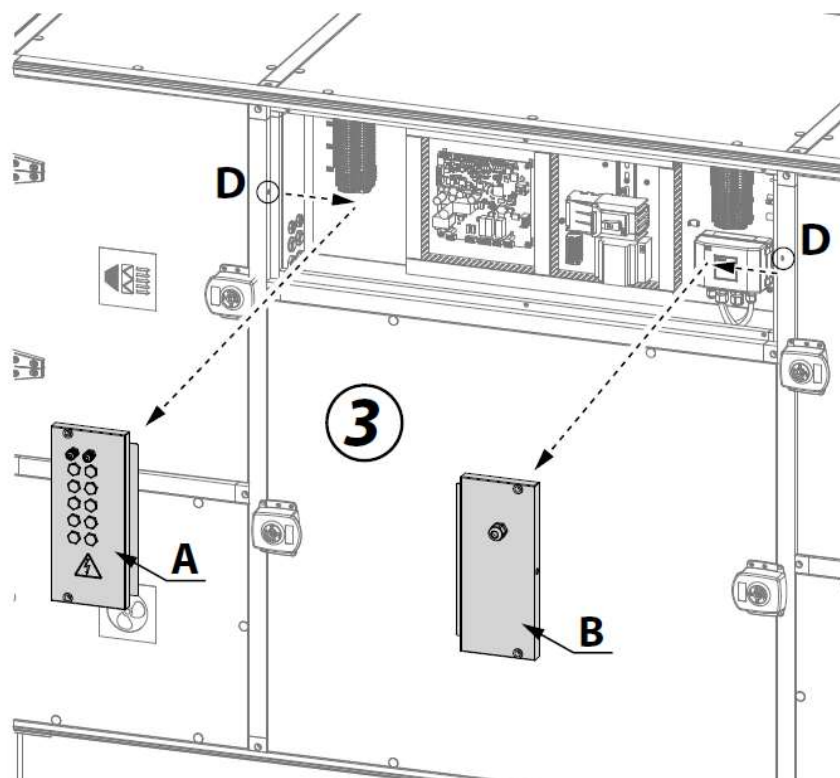
1. Make sure that the C1 switch (C1 and C2 if the unit has an electric pre heater) is in the OFF position.



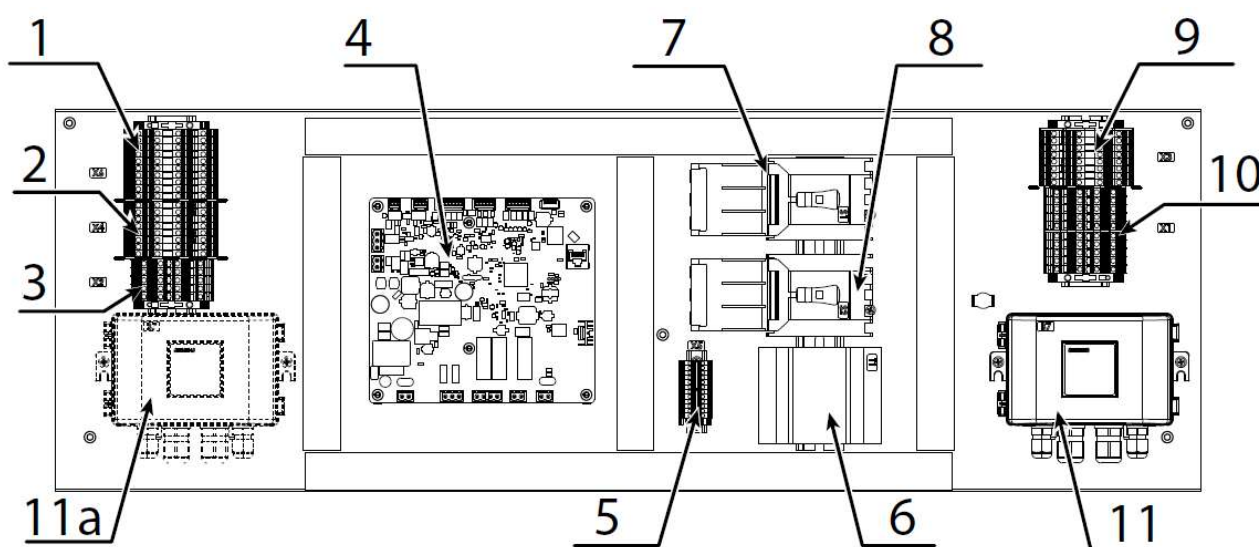
2. Remove the inspection panel "C"



3. Remove the inspection panels "A" and "B". Pay attention to the fixing pin D during the disassembly operation.



## 2.1 Electrical panel



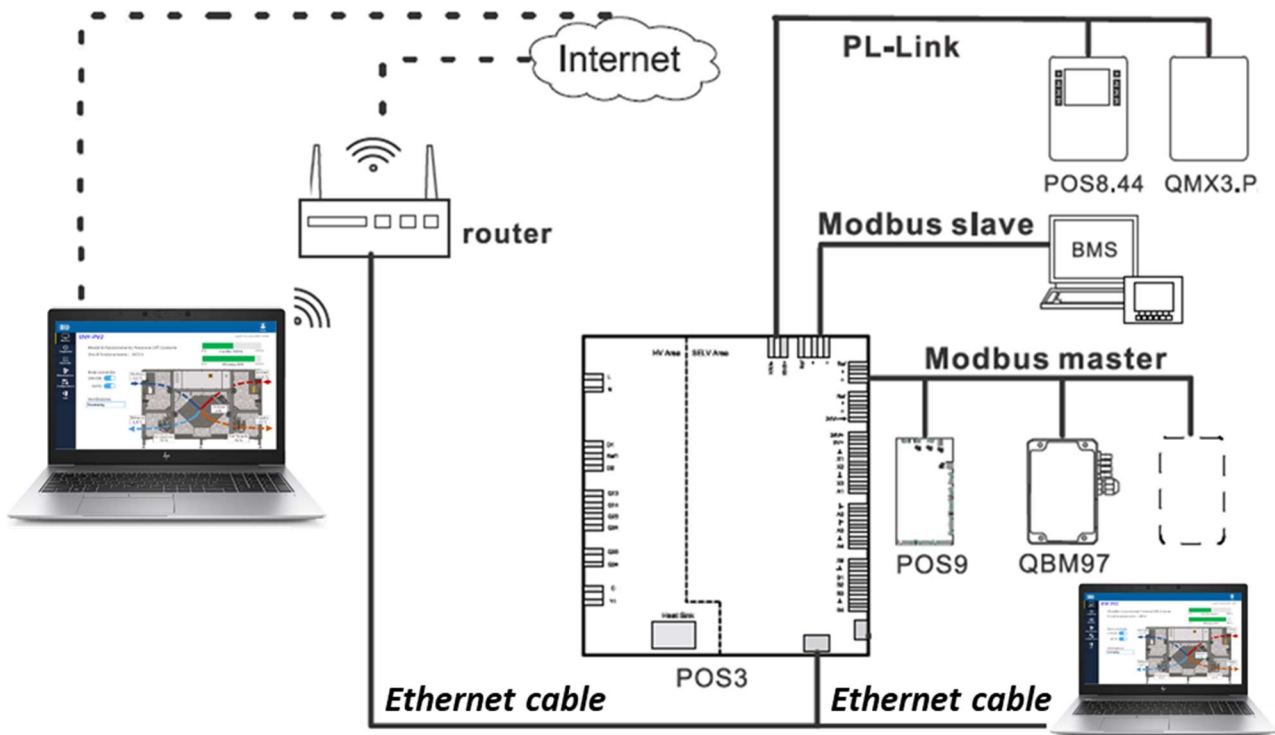
1. Terminal block X6
2. Terminal block X4
3. Terminal block X2
4. Board
5. Terminal block X5
6. 24V power supplier

7. General protection switch
8. Electric preheater protection switch
9. Terminal block X3
10. Terminal block X1
11. Differential pressure sensor
- 11a. Differential pressure sensor

### 3 CONNECTION TO THE UNIT

It is possible to connect the PC to the unit in two different ways:

1. Wired connection
2. Wi-Fi connection



#### 3.1 Wired connection (recommended)

Connect the Ethernet cable to the PC port and to the Board port.

#### 3.2 Wi-Fi connection

Connect the Ethernet cable between the Board and the Router or between the Board and an Access Point (Ex: TP-Link TL-WR802N).

Connect the PC to the Wi-Fi network.

**ATTENTION:** the software speed in the read and write operations depend on the Wi-Fi signal power and on the used hardware.

## 4 ENY-PV MANAGER

### 4.1 Launch the software

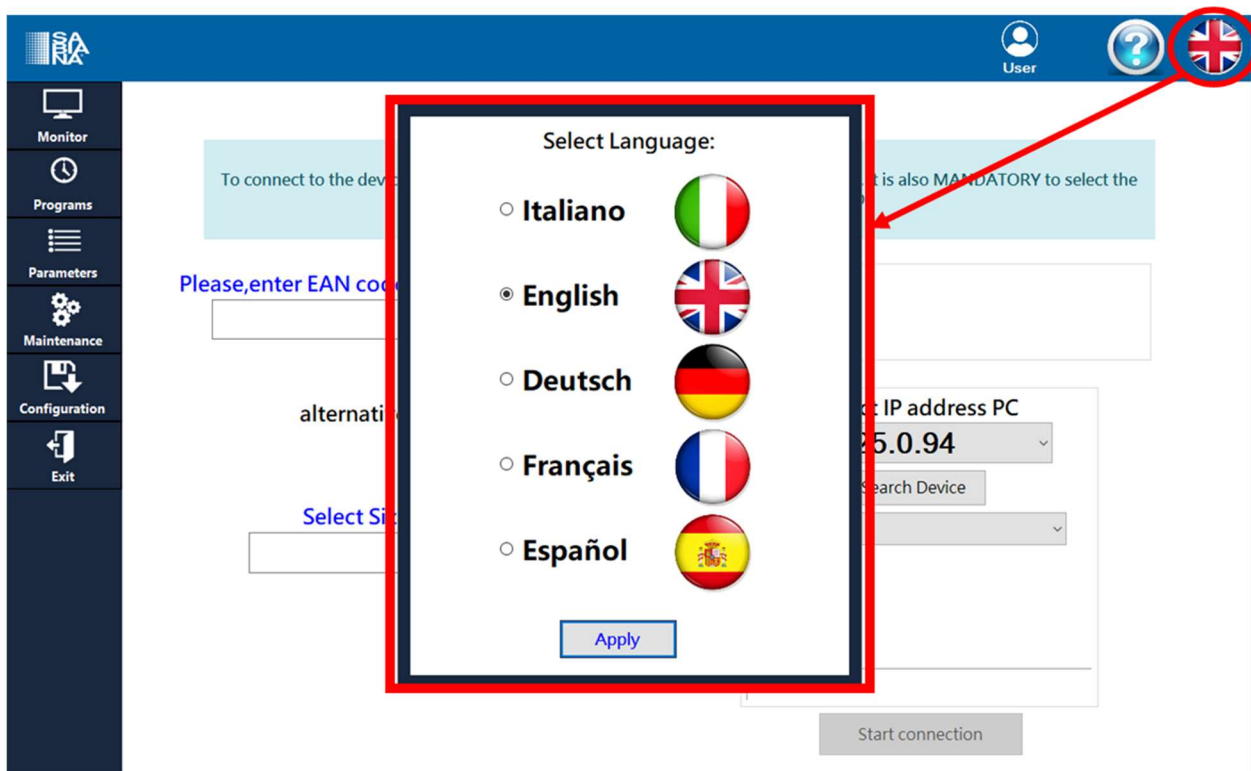
The software does not need an installation on the PC, just run the executable "ENYPVManager.exe" to start.

...\210217 - ENY-PV Manager 0.992\ENYPVManager.exe

### 4.2 General settings

#### 4.2.1 Language button

It is possible to change the software **language** clicking on the Language Button at any time during the software use.



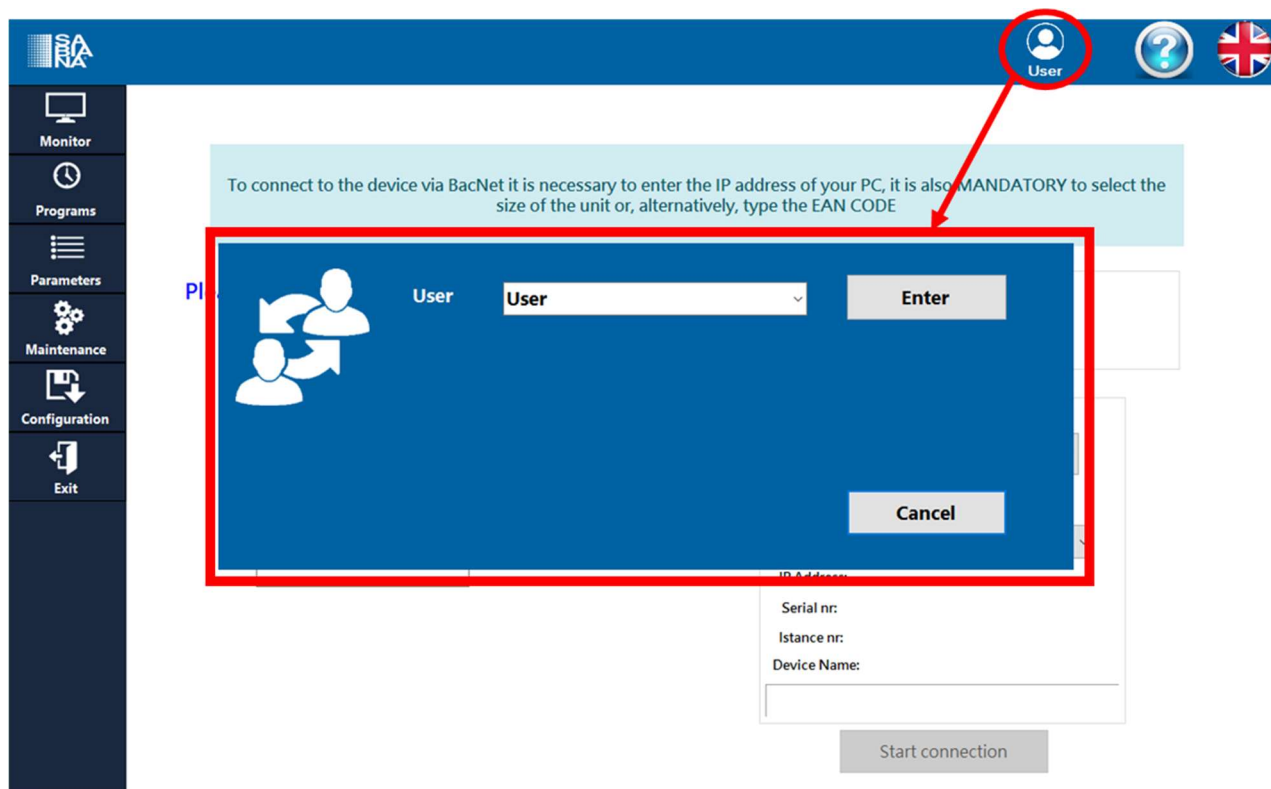
Currently only English and Italian are available.

#### 4.2.2 User type button

There are three different user levels:

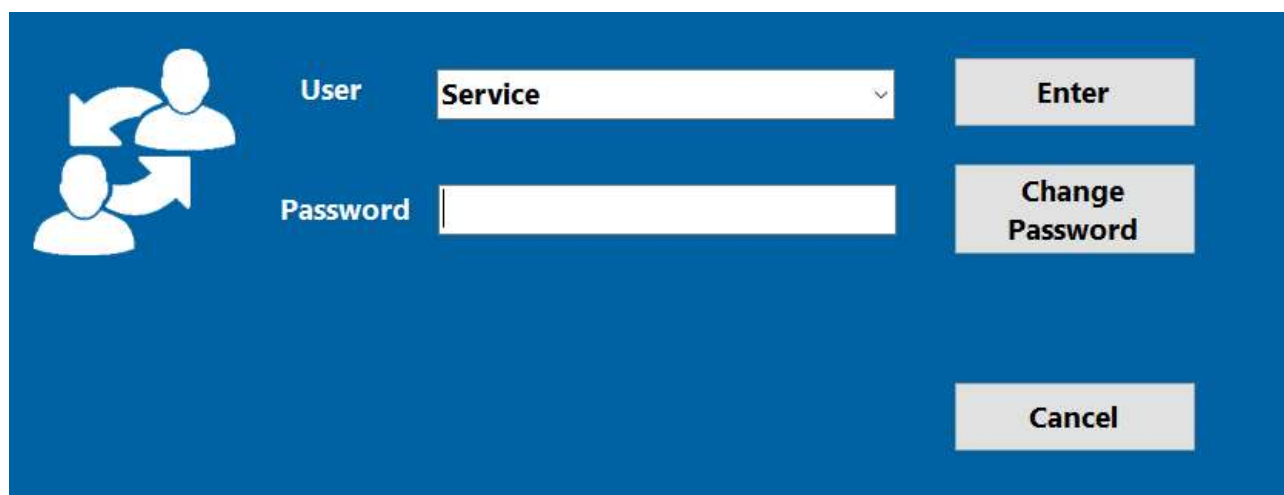
- **User** → without password. It is not possible to change the configuration of the unit. Reduced amount of editable parameters.
- **Service** → With password. It is possible to change the unit configuration. Higher amount of editable parameters than User type. It is possible to select for each parameter if it will be visible for User type or not.
- **Developer** → Currently only for software developer.

It is possible to change the user type clicking on the User Button at any time during the software use.



Clicking on the User button, the highlighted window appears.

The User type “User” is free. There are other 2 User types, Service and Developer. A password is required to log as Service or Developer.



The standard password for the **Service** user type is: **sabiana**.

It is possible to click on “Change Password” to set a new password.



User:

Password:

New Password:

Re-enter new password:

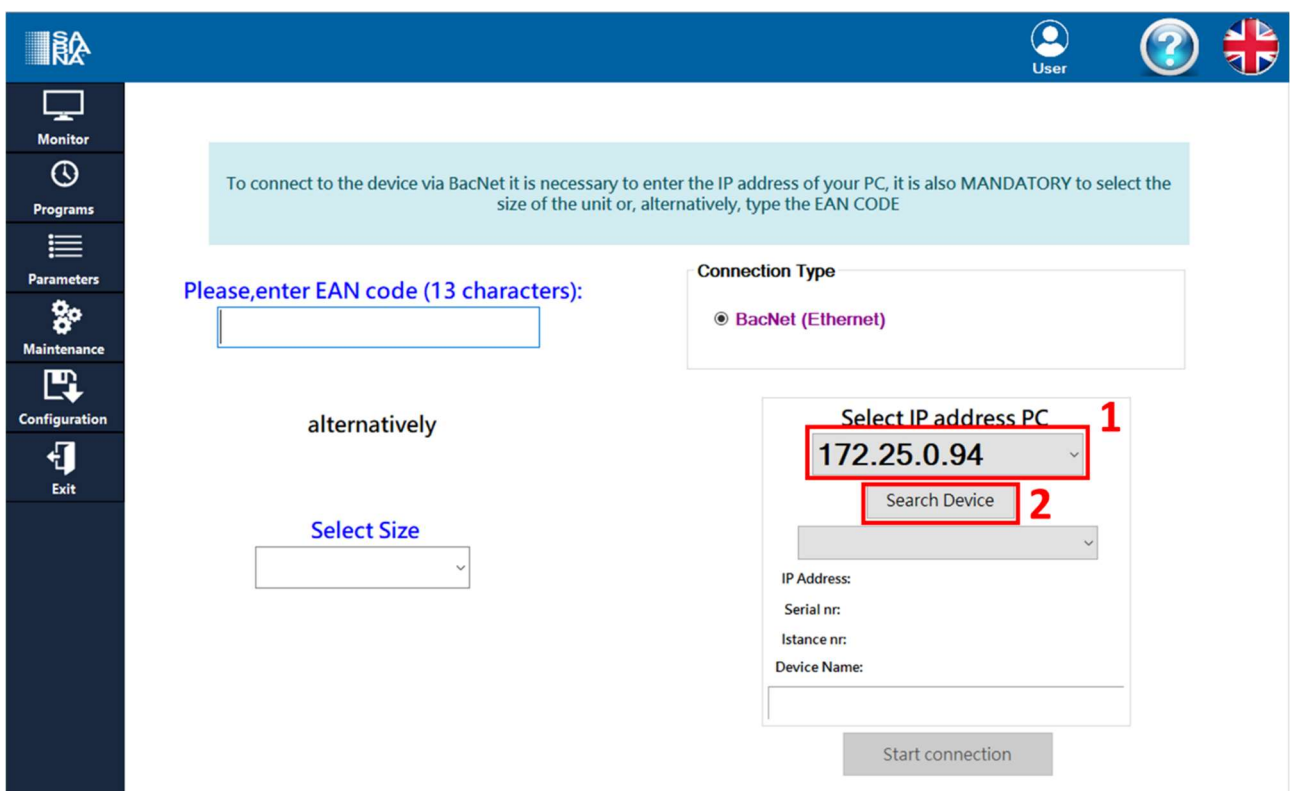
To change the password it is necessary to insert the current one.

#### 4.2.3 Help button

The Help button shows this manual on the PC.

### 4.3 Find the unit

Before this step, be sure that you have properly connected the PC to the unit.



To connect to the device via BacNet it is necessary to enter the IP address of your PC, it is also MANDATORY to select the size of the unit or, alternatively, type the EAN CODE

Please, enter EAN code (13 characters):

alternatively

Connection Type: ☒ BacNet (Ethernet)

Select IP address PC **1**:

Search Device **2**:

IP Address:  
 Serial nr:  
 Instance nr:  
 Device Name:

1. **Select the IP address** of the Port you are using to connect to the unit with the pull-down menu.  
Generally, just one IP address is present in the menu. If there is more than one IP address and you want to know which one you have to choose, you could use the guide at the end of this paragraph.
2. **Click “Search Device”** to start the scanning of the network.

#### 4.4 Connection to the unit

To connect to the device via BacNet it is necessary to enter the IP address of your PC, it is also MANDATORY to select the size of the unit or, alternatively, type the EAN CODE **4**

Please, enter EAN code (13 characters):

alternatively

Select Size

Connection Type  
☒ BacNet (Ethernet)

Select IP address PC  
 172.25.0.94

172.25.0.48:47808  
 IP Address: 172.25.0.48:47808  
 Serial nr: 1601005ECE **3**  
 Instance nr: 1  
 Device Name: POS3.57

**Device Found!**

**5**

3. If a board is found in the network its data appears.
4. **Enter the EAN** code that is on the label on the unit side **or select the unit size**. This is necessary to enable the following steps.
5. **Press the “Start Connection”** button to connect to the unit.